

Spring Lake Park Tribune

Vol.1

HilleetPress

November 4, 2013

Culprit in suspicious death identified

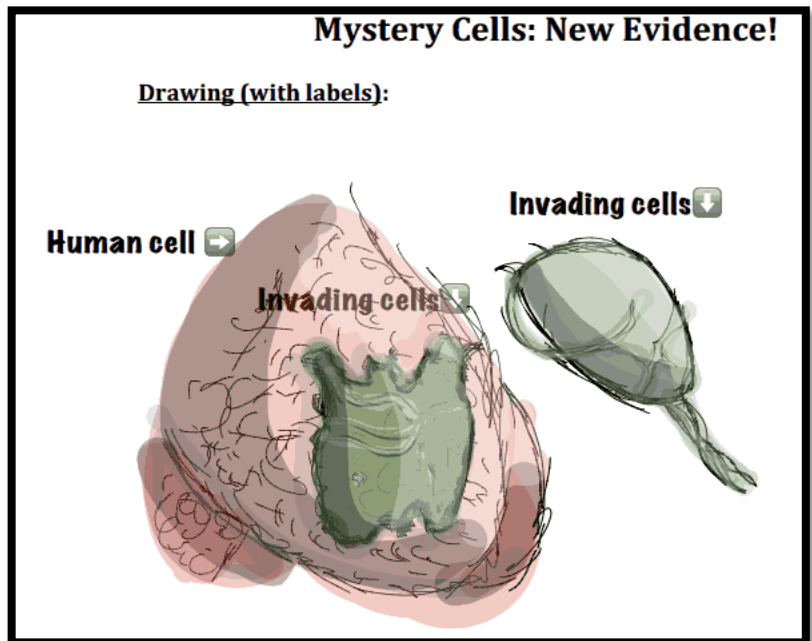
A dead body was found behind Westwood Middle School late last month. Some mysterious cells were recovered from the dead body, and investigators asked the community for help in identifying the killer. Through exhaustive research, student investigators were able to identify different components of plant and animal cells, contributing to the conclusion that the mystery cells belonged to an animal species. "The mystery cells were blobby," reports one student, "just like the cheek cells we saw through the microscope."

Another student reports, "Plant cells are neat and orderly. They have a cell wall, which helps them maintain their shape. This allows them to stack in rows and columns." As seen in the photo (right) the two mystery cells viewed under a microscope were not orderly. They were spaced randomly, leading investigators to their conclusion that these are, indeed, animal cells.

Some investigators are in an outrage about the case, citing that they need more evidence to be sure. "If we could see inside the cell, we would be able to draw more accurate conclusions," says another student investigator. "If there were chloroplasts and a large central vacuole inside, then we would be wrong. Those would signify a plant cell." These opponents urge colleagues to investigate further before making any rash judgments.



Still, authorities have taken one suspect into custody. Known to most as "Giardia", this little animal-like parasite has been known to cause extreme discomfort in the company of unsuspecting humans. With his undefined build and blobby appearance, Giardia seems to fit the description of the mystery cells. Police records indicate several complaints of Giardia loitering randomly with bunches of friends and inappropriate clumping around town. Police hope that getting this invader off the street, and out of the water, will ease the tension in surrounding neighborhoods.



Picture (above): Invading mystery cells were recovered from a dead body behind Westwood Middle School. Investigators have identified these as animal cells.